



TOPIC/OBJECTIVE:

G2b: line & angle Prop.

CONTENT/CLASS:

Geometry

NAME:

CLASS/PERIOD:

4

DATE:

11/3/15

ESSENTIAL QUESTION:

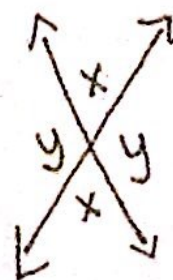
Where are the Pairs of congruent and supplementary angles located when lines intersect?

QUESTIONS:

NOTES:

Line and Angles Properties Summary

① When two lines intersect



$x = x$

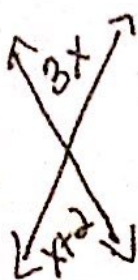
$y = y$

$x = 180 - y$  or  $y = 180 - x$

$x + y = 180$

all the same relationship

Eg:



Solve for x:

$3x = x + 2$

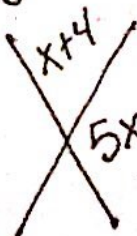
$-x \quad -x$

$2x = 2$

$\frac{2}{2} \quad \frac{2}{2}$

$x = 1$

Eg:



$5x + x + 4 = 180$

$6x + 4 = 180$

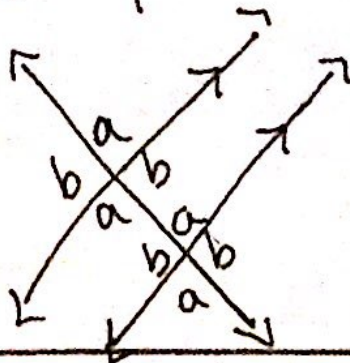
$-4 \quad -4$

$\frac{6x}{6} = \frac{176}{6}$

$x \approx 29.33$

② When a transversal

crosses parallel lines.



$a = a$

$b = b$

$a + b = 180$

SUMMARY: