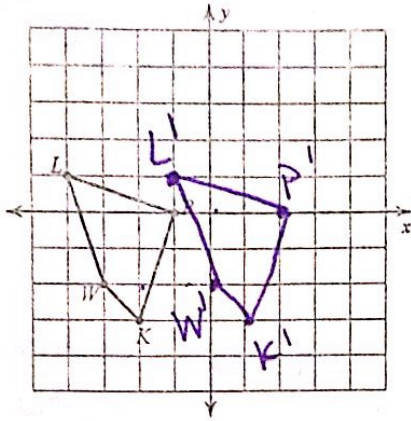
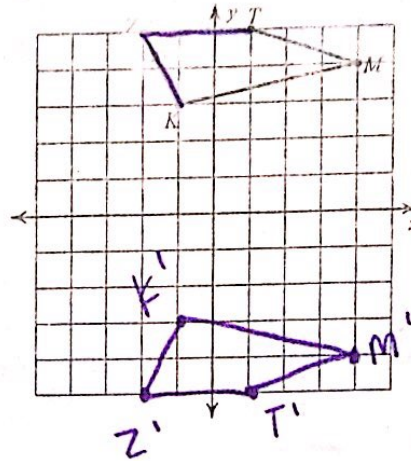


Graph the image of the figure using the transformation given.

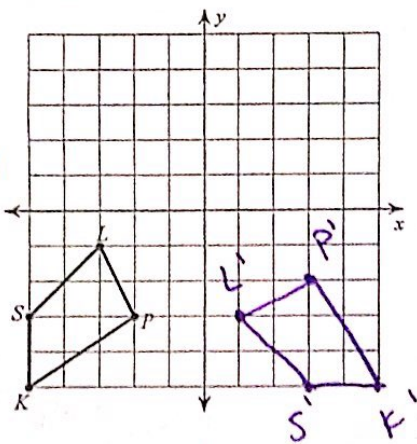
1) translation: 3 units right



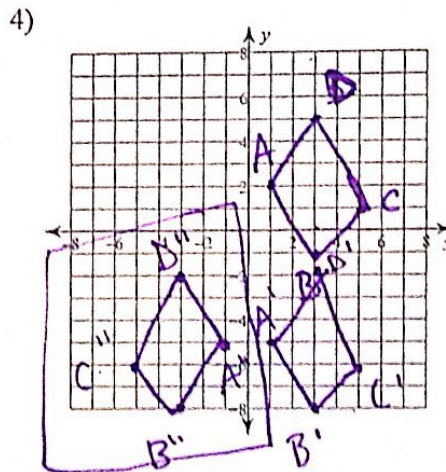
2) reflection across the x-axis



3) rotation 90° counterclockwise about the origin

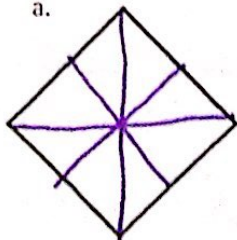


Translate image 7 units down and reflect over the y-axis.



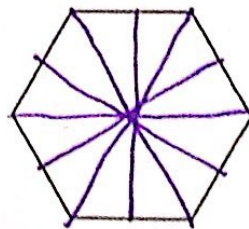
5. For each Regular Polygon below, draw all line of reflection and give the measurement of the smallest angle of rotation.

a.



90°

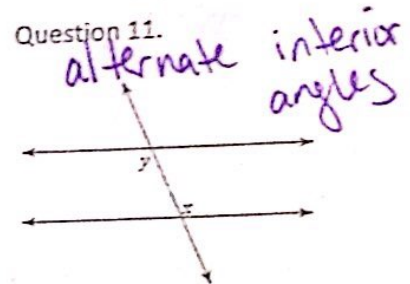
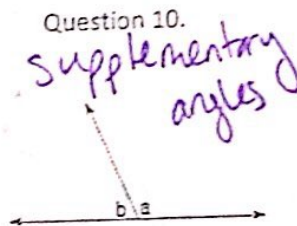
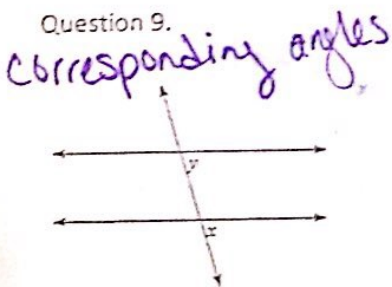
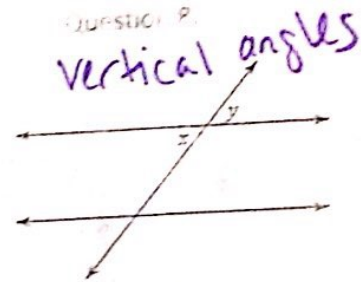
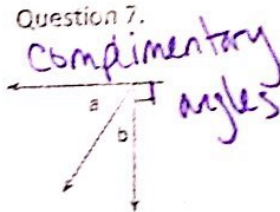
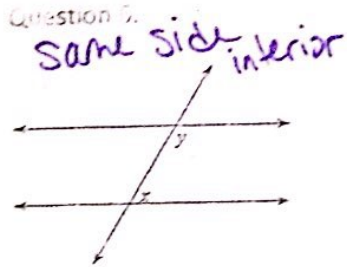
b.



60°

Angle Vocabulary Match

Match each picture with the vocab term that describes the angle relationship.



1- Alternate Interior Angles

2- Vertical Angles

3- Corresponding Angles

4- Alternate Exterior Angles

5- Complimentary Angles

6- Supplementary Angles

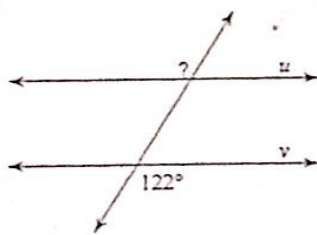
7- Same Side Interior Angles

8-Triangle Sum

9- Same Side Exterior Angles

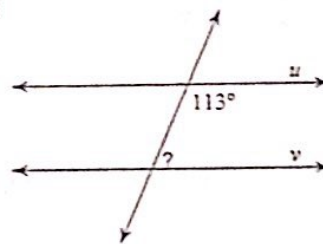
Find the measure of the indicated angle that makes lines u and v parallel.

12)



? = 122°

13)

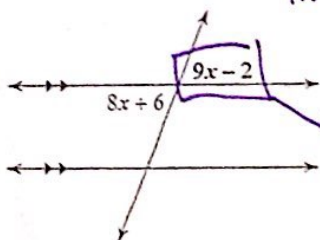


? = 180° - 113°

? = 67°

Find the measure of the angle indicated in bold.

14)

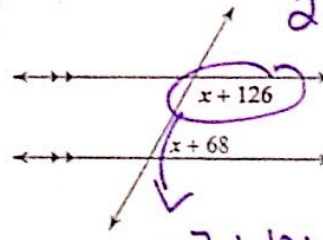


$9x - 2 = 8x + 6$

$x = 8$

$9(8) - 2 = 70^\circ$

15)



$x + 126 + x + 68 = 180$

$2x + 194 = 180$

$2x = -14$

$x = -7$

$-7 + 126 = 119^\circ$