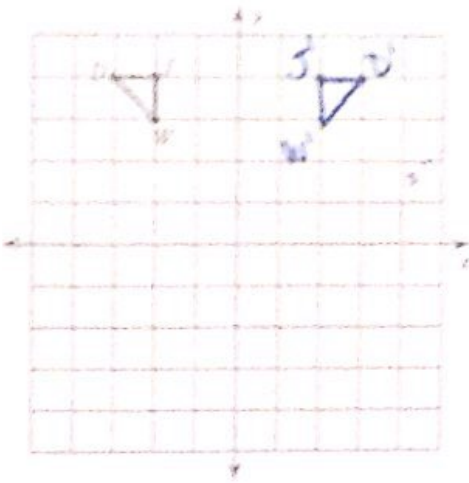


Key

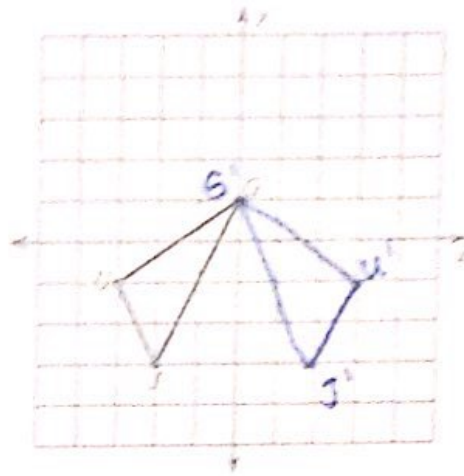
REFLECTING SHAPES

Graph the image of the figure using the transformation given.

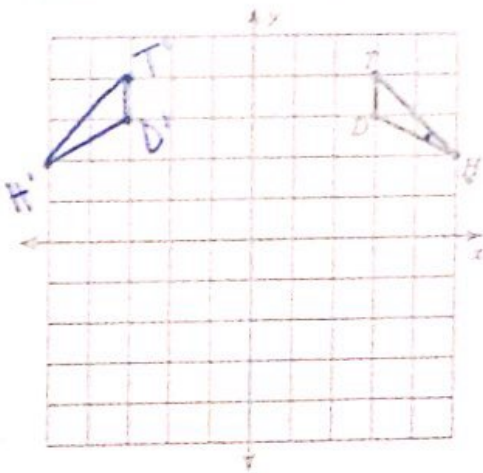
1) reflection across the y-axis



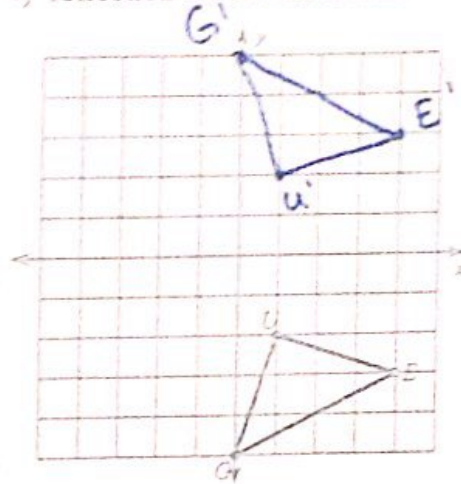
2) reflection across the y-axis



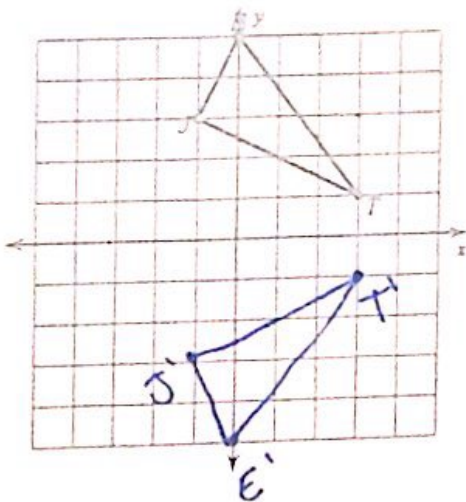
3) reflection across the y-axis



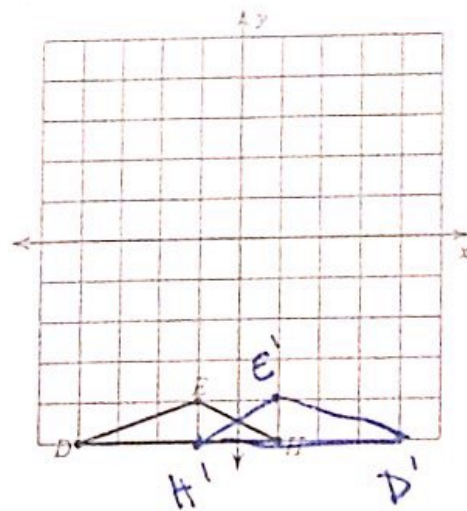
4) reflection across the x-axis

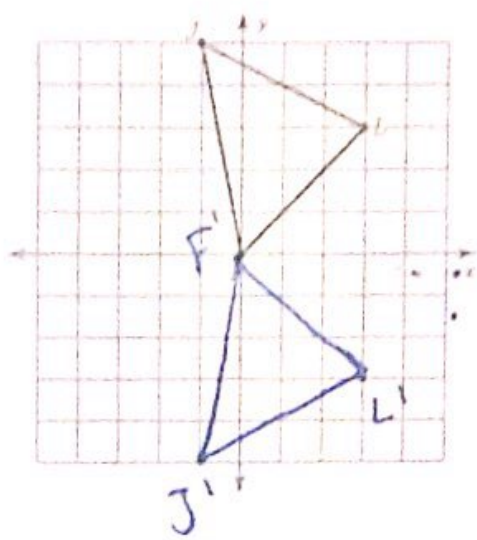
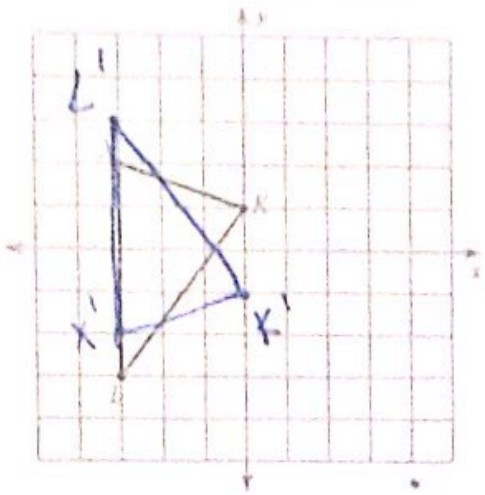


5) reflection across the x-axis



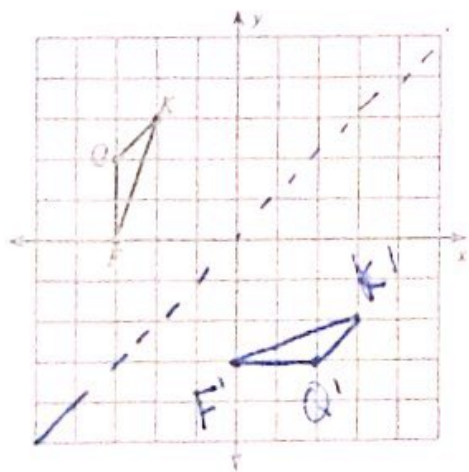
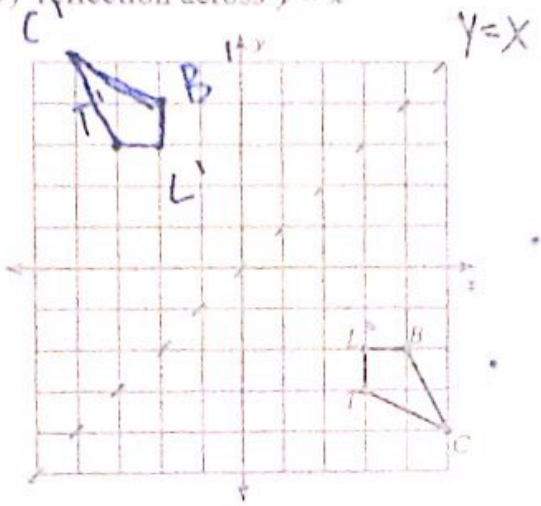
6) reflection across the y-axis





9) reflection across $y = x$

10) reflection across $y = x$



11) reflection across $y = -x$

12) reflection across $y = -x$

