

G11: Coordinate Geo
Geometry

5

9/10

ESSENTIAL QUESTION:

What are some types of quadrilaterals?

Questions

Notes

Quadrilateral - a four sided shape

Types of quadrilaterals:

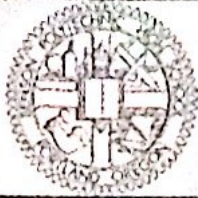
Square - All angles are 90° (right angles)
All sides are congruent
(the same size)

Rectangle - All right angles (90°)
2 pairs of opposite congruent sides

Trapezoid - exactly one pair
of parallel sides

Parallelogram - 2 pairs of opposite
parallel sides

Summary



ESSENTIAL QUESTION:

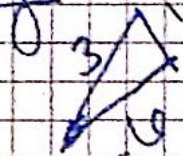
Questions

Notes

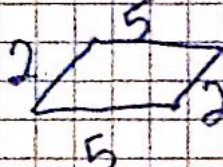
Perimeter - the length of all sides in a polygon (shapes not including circles)

* We find perimeter the same way for all shapes with sides (not circles)

Eg:



$$P = 3 + 4 + 5 = 12$$



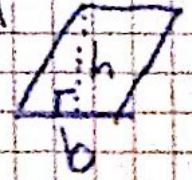
$$P = 2 + 5 + 2 + 5 = 14$$

Area formulas for quadrilaterals

Area of rectangle: $A = b \cdot h$



Area of parallelogram: $A = b \cdot h$



Area of trapezoid:

Summary

$$A = \frac{(b_1 + b_2) \cdot h}{2}$$

