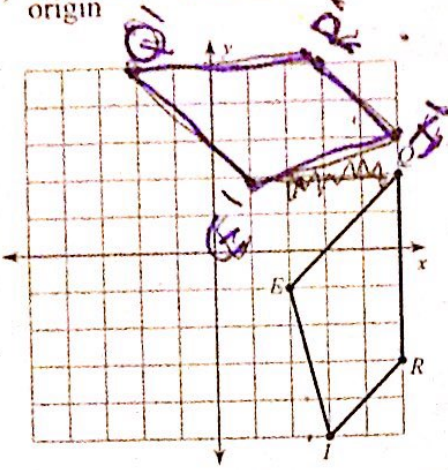


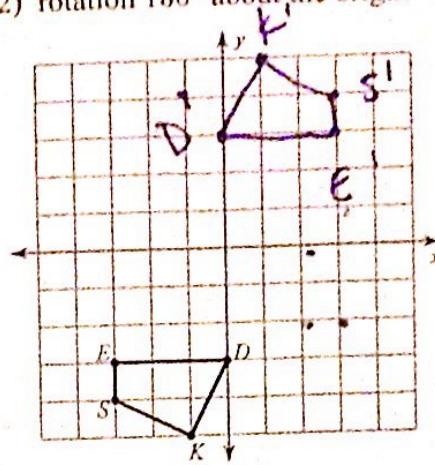
G2a Warm Up 10/5 or 10/6

Graph the image of the figure using the transformation given.

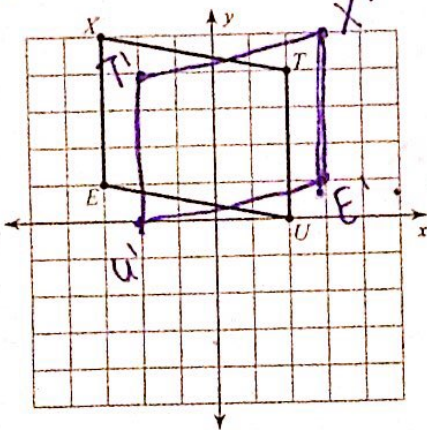
1) rotation 90° counterclockwise about the origin



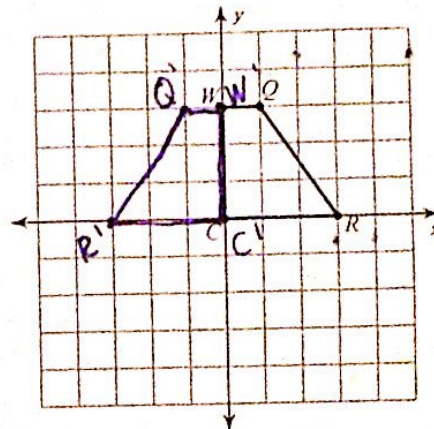
2) rotation 180° about the origin



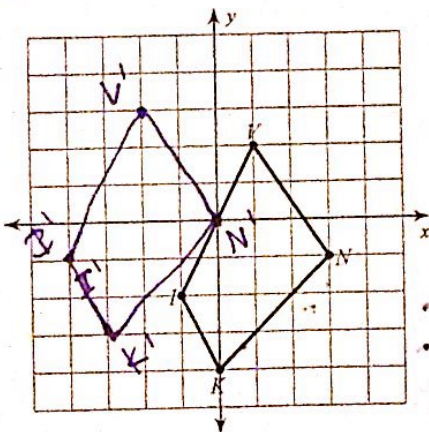
3) reflection across the y-axis



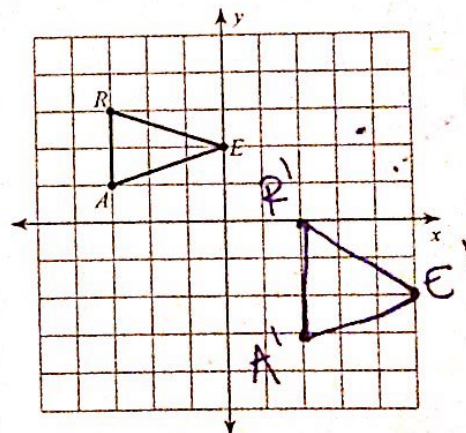
4) reflection across the y-axis



5) translation: 3 units left and 1 unit up

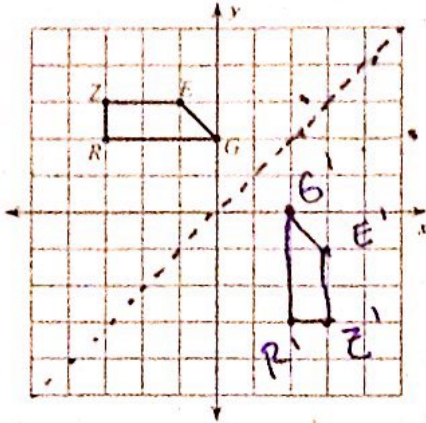


6) translation: 5 units right and 3 units down

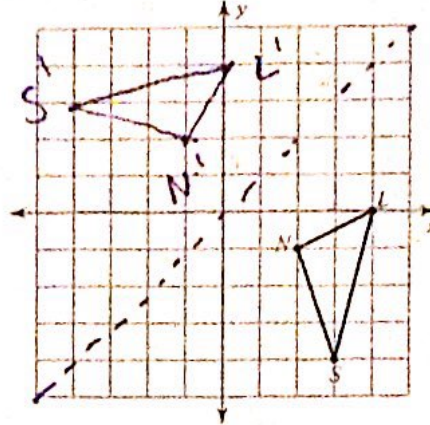


Advanced Reflections Extra Practice

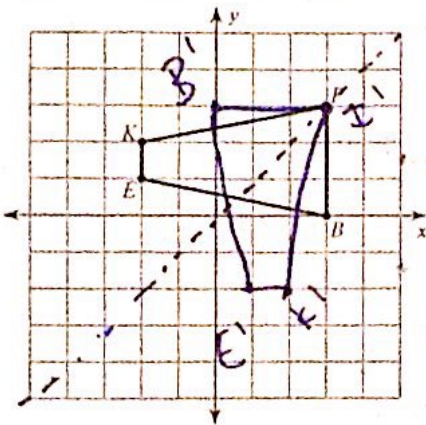
7) reflection across $y = x$



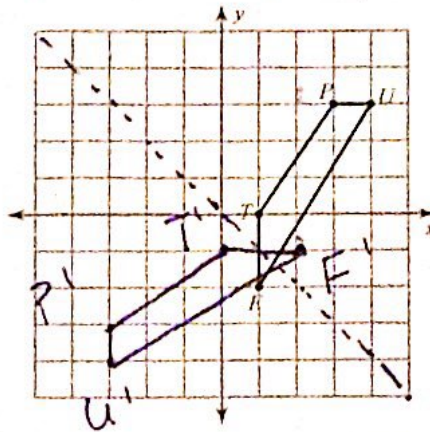
8) reflection across $y = x$



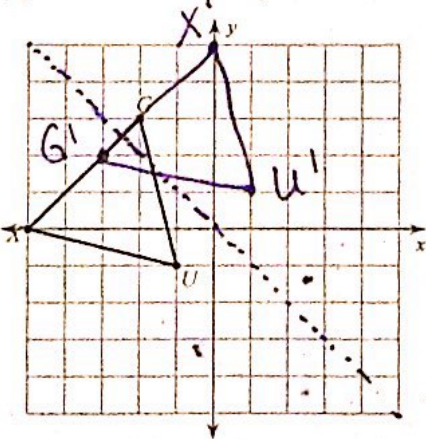
9) reflection across $y = x$



10) reflection across $y = -x$



11) reflection across $y = -x$



12) reflection across $y = -x$

